



www.nihpromis.org/

Utilizing the NIH Patient-Reported Outcomes Measurement Information System

Thelma Mielenz, PhD

Assistant Professor, Department of Epidemiology

Columbia University, Mailman School of Public Health



Broad Objectives of PROMIS

- Develop and test a large bank of items measuring patient-reported outcomes
- Create a computerized adaptive testing (CAT) system that allows for efficient, psychometrically robust assessment of patient-reported outcomes in clinical trial research involving a wide range of chronic diseases
- Create a publicly available system that can be added to and modified periodically and that allows clinical researchers to access a common repository of items and computerized adaptive tests

(Objectives from: <http://www.nihpromis.org/Web%20Pages/History.aspx> Assessed: 01/19/11)



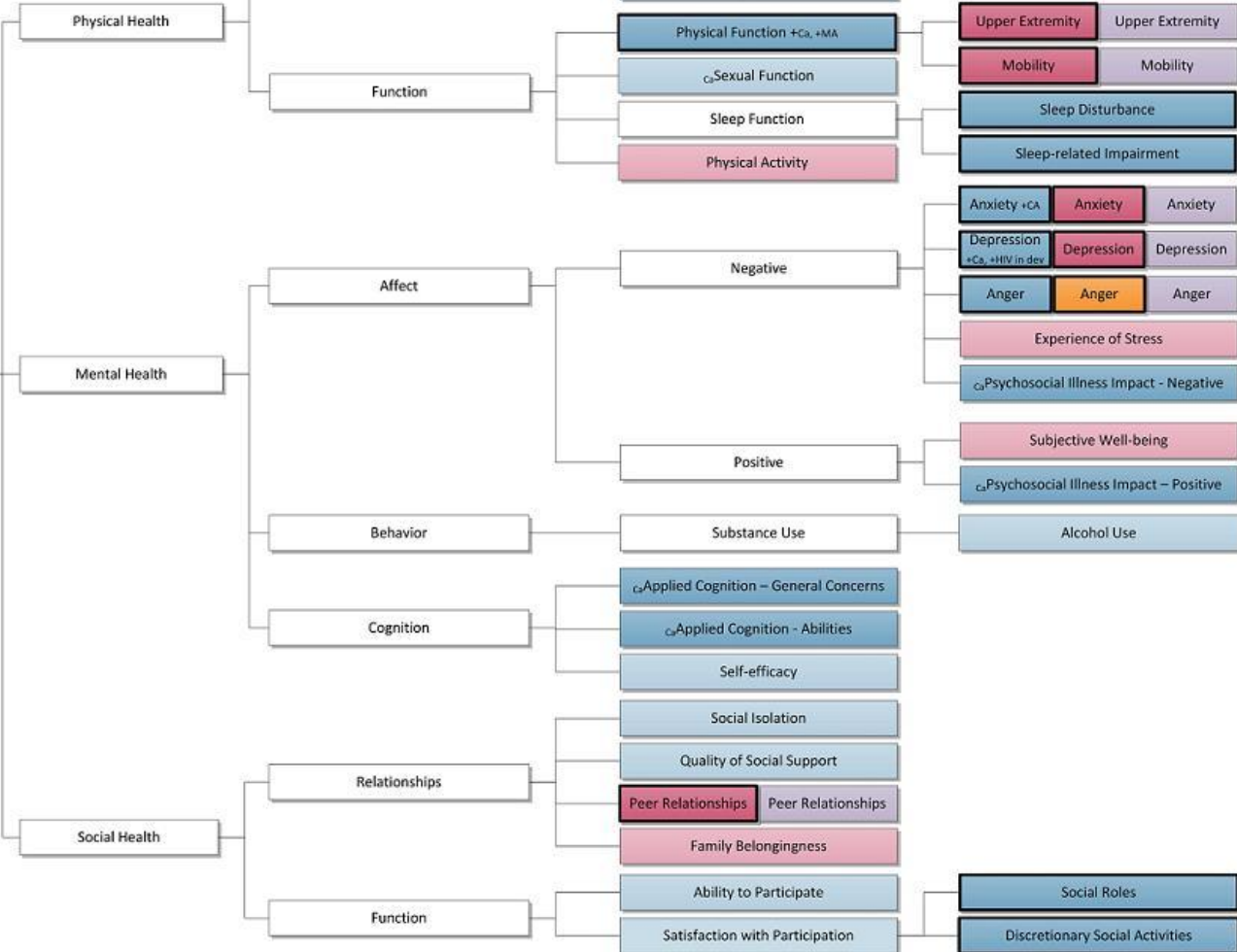
PROMIS Domain Framework

August 27, 2010 Draft

Item Bank - Adult
Item Pool - Adult
Bank in Development - Adult
Item Bank - Pediatric
Calibrated Scale - Pediatric
Bank in Development - Peds
Item Bank - Pediatric Proxy in development

Subscripts indicate additional bank variations for specified subgroups. Ca = Cancer, MA = Mobility Aids, HIV.

A heavy dark border indicates this instrument is currently available in Assessment Center.



(From: <http://www.nihpromis.org/Web%20Pages/Domain%20Framework.aspx> Assessed 1/19/11.



Physical Health

Physical Function
Pain Intensity
Pain Interference
Fatigue
Sleep Disturbance

PROMIS Profile
Domains

Mental Health

Depression
Anxiety

Anger
Applied Cognition
Alcohol Use,
Consequences, &
Expectancies
Psychosocial Illness
Impact

Social Health

Satisfaction with
Participation in
Social Roles

Satisfaction with
Social Roles &
Activities
Ability to
Participate in Social
Roles & Activities
Social Support
Social Isolation
Companionship

PROMIS Additional
Domains

Pain Behavior
Sleep-related
Impairment
Sexual Function



PROMIS History



The Patient Reported Outcomes Measurement Information System (PROMIS): *A Walk Through the First Four Years*

(From: http://www.nihpromis.org/Documents/PROMIS_The_First_Four_Years.pdf Assessed 10/30/13)



Classical Test Theory

- Scale is the unit of analysis
- High score – the person is higher on the trait
- Low score – the person is lower on the trait

Item Response Theory

- Item is the unit of analysis
- Person endorses better rating on “hard items” – the person is higher on the trait
- Person endorses worse rating on “easy items” – the person is lower on the trait

(Modified From: http://www.nihpromis.org/Lists/Assessment%20Center%20Link/Attachments/4/IRT-CAT_Workshop_7-17-08%5B1%5D.pdf Accessed: 01/19/10)



COMMON IRT MODELS

IRT Model	Response Format (i.e., dichotomous or polytomous)	IRT Model Parameters (discrimination and difficulty)
1PL	dichotomous	discrimination = and difficulty varies
2PL	dichotomous	discrimination varies and difficulty varies
3PL	dichotomous	discrimination , difficulty and guessing vary
GRM	polytomous	discrimination varies across items and difficulty varies

Streiner and Norman 2008 p. 304-309



2 ASSUMPTION OF ITEM RESPONSE THEORY

1. Data are unidimensional: Items tap only one trait or ability
2. Local independence: Probability of answering any item in a positive direction unrelated to probability of answering any other item positively

Streiner and Norman 2008 p. 302



If the assumptions are met, then...

- Subject's performance on a test can be predicted by a set of factors called traits (θ)
- Subject's performance on any item and the θ can be described by an item characteristic curve

Streiner and Norman 2008 p. 302



Example of Item Information Functions and Standard Error Curves.

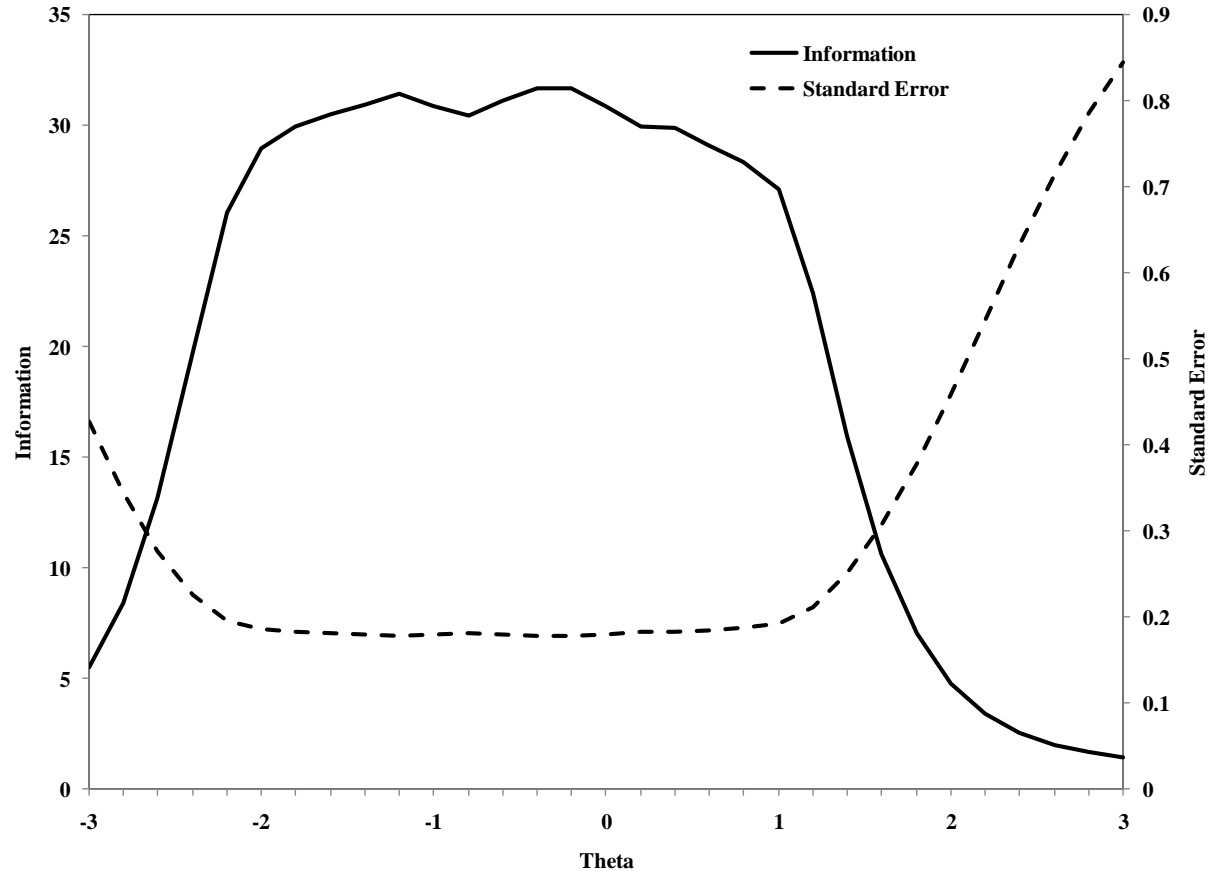


Figure 2 from Mielenz et al. Arthritis 2010



PROMIS Instructional Videos

Conceptual Introduction to Item Response Theory

The video below connects to a series of six training videos item response theory developed by Karon F. Cook (Northwestern University).

The six videos are:

Part 1. The Logic of IRT Scoring

Part 2. IRT Is a Probability Model

Part 3. Plotting Along: How item responses are related to person and item characteristics

Part 4. Understanding Item Parameters: Difficulty and Discrimination

Part 5. Information: A Better Measure of Measurement Precision

Part 6. Applications of Item Response Theory

(From: <http://www.nihpromis.org/about/instructional> Assessed 10/30/13)



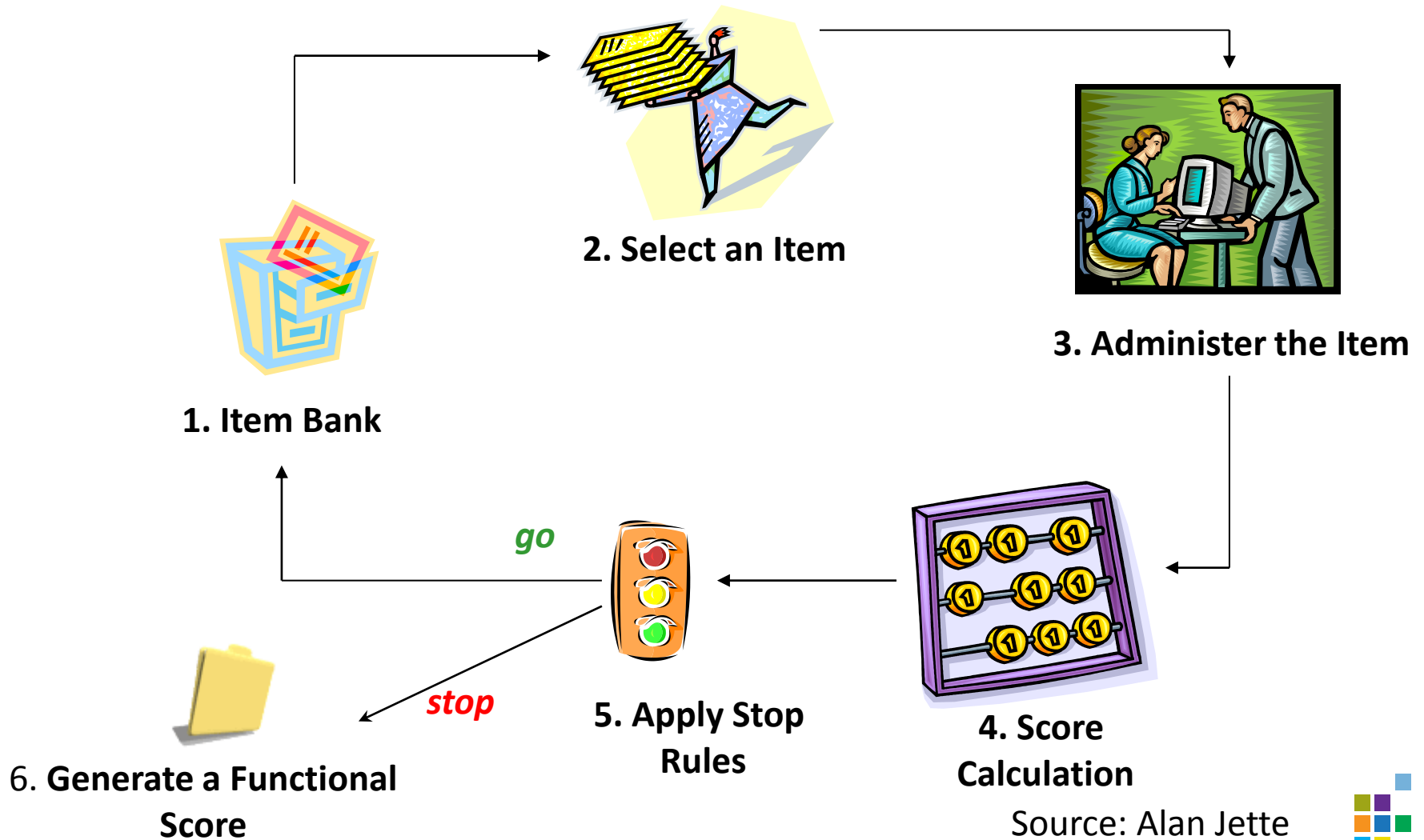
Item Response Theory and Computer-Adaptive Testing

- Reduces the amount of time required to complete assessments and increases precision by asking only those questions that are relevant to the person's functional level.
- In an adaptive test, as the person responds to items, revised estimates of functional levels are estimated, and then subsequent items for administration are chosen accordingly.
- Computer-adaptive testing (CAT) employs an algorithm that selects items directly tailored to the person, and shortens or lengthens the test to achieve either the desired precision or a preassigned item stopping rule.
- Item response theory (IRT) methods are used to create hierarchically ordered item banks, and then CAT software algorithms select items to match the person's functional level.

Haley et al. *J Clin Epidemiol* 2006;59:1174-82



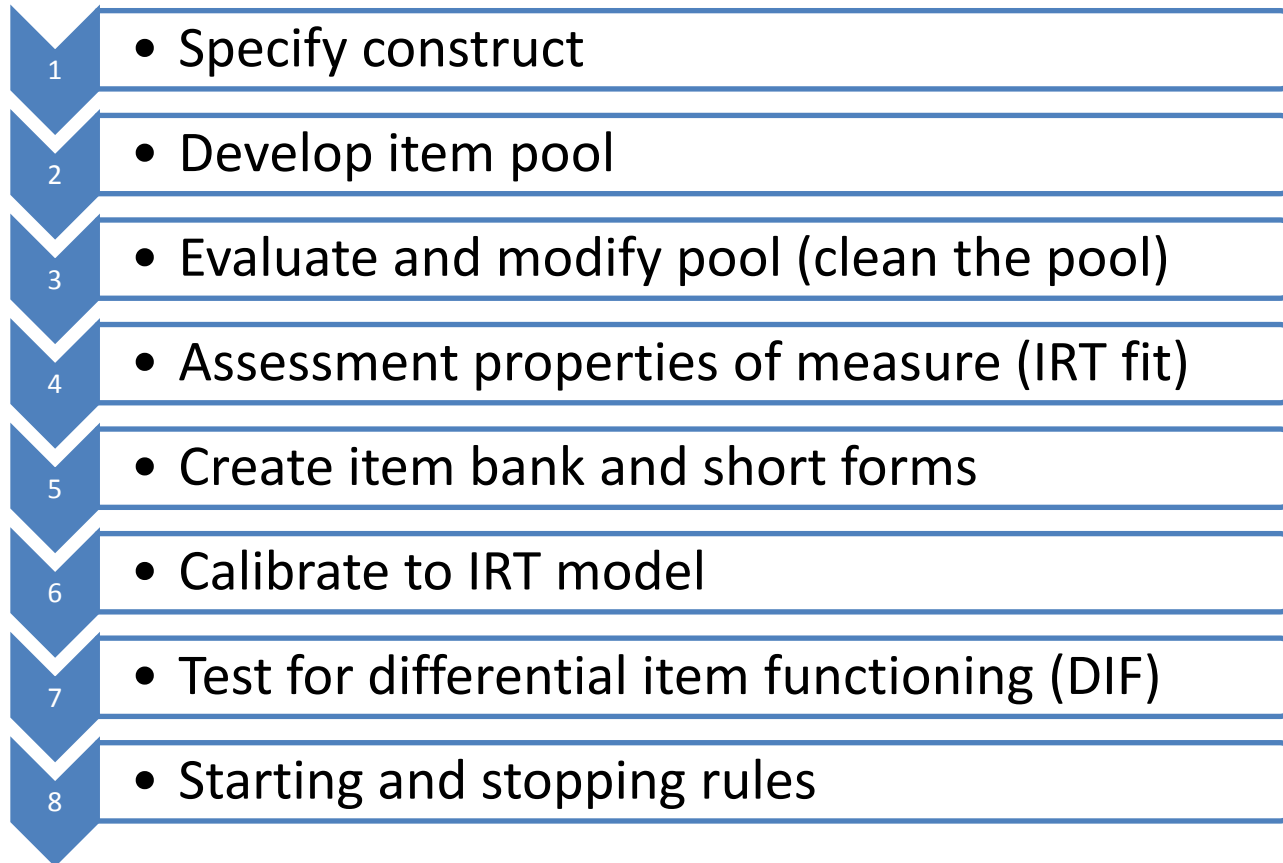
CAT process



Source: Alan Jette



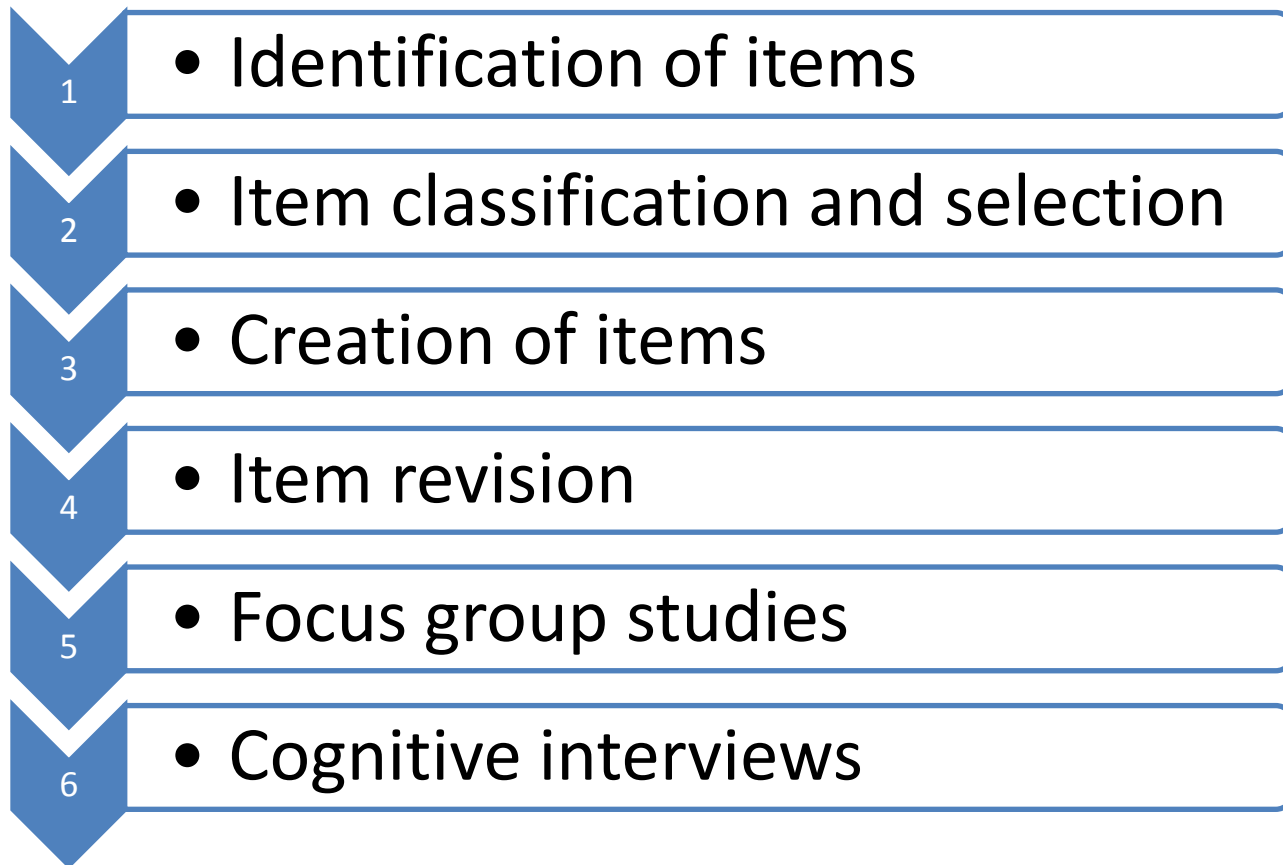
Steps involved in creating a CAT



Lecture by: Karon F. Cook, PhD, Dept. of Rehab. Medicine, University of Washington, Seattle, WA March 10, 2011



PROMIS Qualitative Item Review



From DeWalt DA, Rothrock N, Yount S, Stone AA. Evaluation of Item Candidates: The PROMIS Qualitative Item Review. *Medical Care*; 2007(5):S12-S21.



Identification of items

PROMIS began by depositing items into an item library from well-established instruments and from inclusive searches

Thousands of items relevant to the domains PROMIS was trying to measure were selected

For each item the instructions, the stem, the response options, the time frame, and the instrument of origin was documented

- <http://www.nihpromis.org>



Expert Review: Item Classification, Selection, Creation and Revision

In order to sort the thousands of items, they were placed in common “bins” by the content of their stem and “winnowed” out if they were deemed redundant or inferior to alternative items in the same bin.

Items were then reviewed and revised to: 1) be consistent in the style of questions, 2) meet the literacy requirements (6th grade level) and 3) be consistent in set of response options and timeframes.

- <http://www.nihpromis.org>



Focus Group Studies have 2 aims

1) to confirm the definitions and identify common language related to the domain and

2) to identify important gaps for future PROMIS item banks

- <http://www.nihpromis.org>



Cognitive Interviews

“To identify potentially problematic items and response scales and help to clarify items that were not easily understood and answered”

PROMIS used a retrospective verbal probing technique where a participant completes a paper and pencil version of the measure followed by an interviewer asking probes for the basis for the response.

- <http://www.nihpromis.org>



Developing the PROMIS Physical Function Item Bank

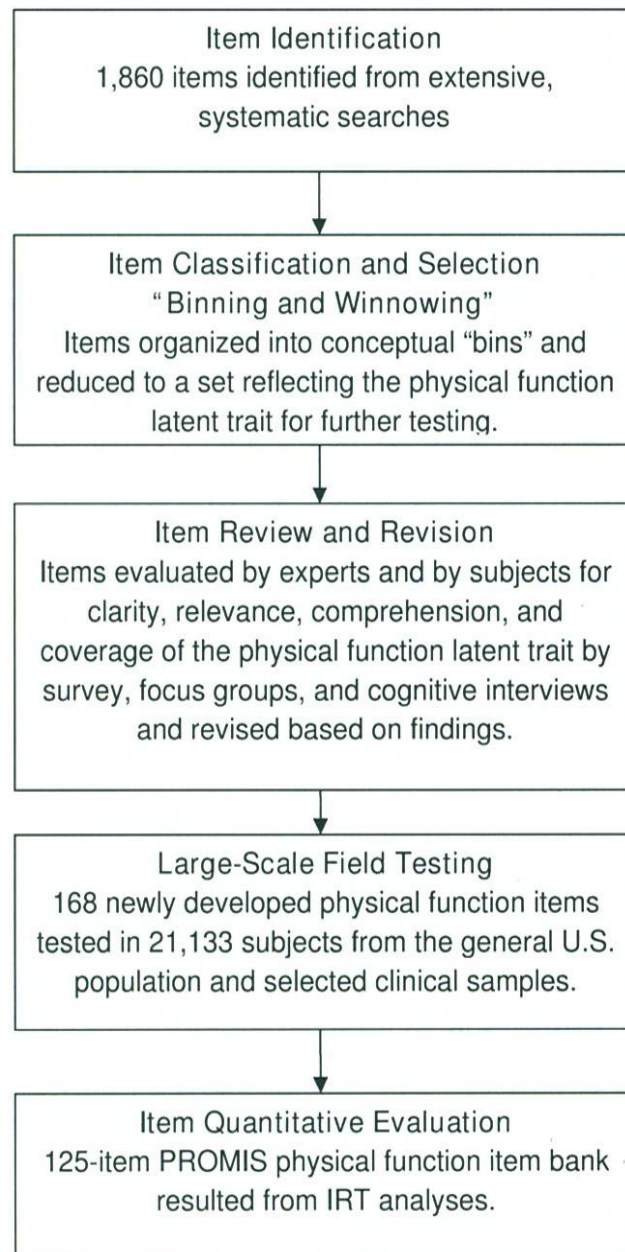
In PROMIS, the Physical Function latent trait is defined as the "ability to carry out various activities that require physical capability, ranging from self-care (basic activities of daily living (ADL)) to more-vigorous activities that require increasing degrees of mobility, strength, or endurance"
[<http://www.nihpromis.org/>].¹

1. Bruce B, Fries J, Ambrosini D, Lingala B, Gandek B, Rose M and Ware J. Better assessment of physical function: item improvement is neglected but essential. *Arth Res&Ther* 2009, 11:R191.

2. Rose M, Bjorner J, Becker J, Fries J, Ware J. Evaluation of a preliminary physical function item bank supported the expected advantages of the PROMIS. *J Clin Epi* 2008, 61:17-33.



Figure 1



Bruce et al. 2009

Overview of the stepwise qualitative and quantitative activities used to develop the PROMIS Physical Function Item Bank.



Item Identification

HAQ: Health Assessment Questionnaire

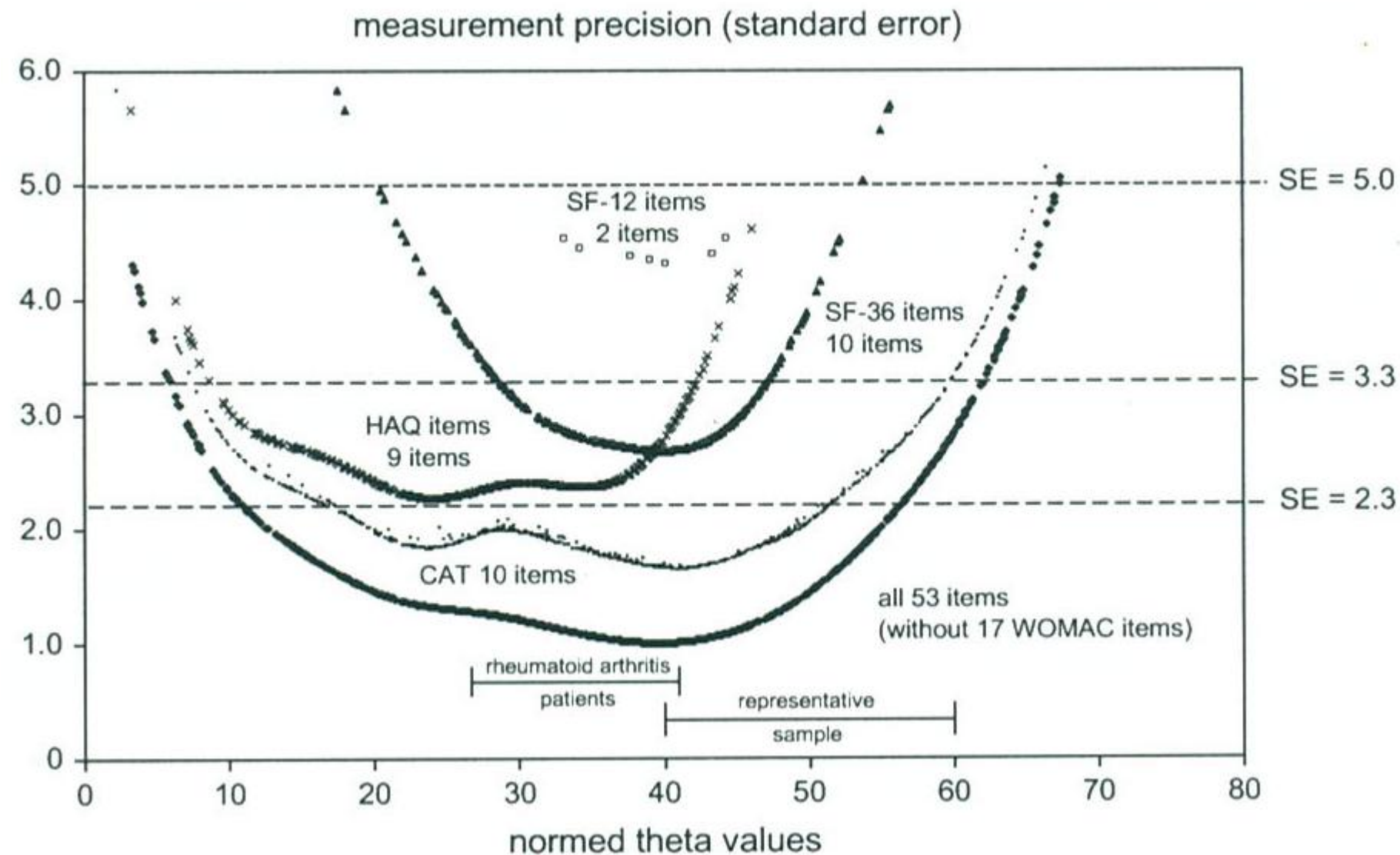
WOMAC: Western Ontario and McMaster Universities osteoarthritis index

SF-36

SIP: Sickness Impact Profile



Figure 3. Measurement Precision in Relationship to Theta



Rose et al. 2008



PROMIS Assessment Center

• <http://www.assessmentcenter.net/>

• Create a publicly available system that can be added to and modified periodically and that allows clinical researchers to access a common repository of items and computerized adaptive tests

(Objectives from: <http://www.nihpromis.org/Web%20Pages/History.aspx> Assessed: 01/19/11)



PROMIS Instructional Videos

What is PROMIS and PROMIS Instruments

The video below connects to a playlist of six training webinars on PROMIS, PROMIS instruments and Assessment Center, developed by Nan Rothrock (Northwestern University).

The six videos are:

Part 1. What is PROMIS?

Part 2. PROMIS Instruments

Part 3. What is CAT?

Part 4. PROMIS Instrument Development

Part 5. PROMIS Instrument Reliability and Validity

Part 6. Introduction to Assessment Center

(From: <http://www.nihpromis.org/about/instructional> Assessed 10/30/13)



Firefox PROMIS Assessment Center

www.nihpromis.org/software/assessmentcenter

PROMIS[®]

Dynamic Tools to Measure Health Outcomes from the Patient Perspective

Home About PROMIS[®] Measures Science Software What's New Related Resources PROMIS[®] For You Search

Home >> Software

- Assessment Center
- Software Demonstration
- Sample Questions
- Request Short Forms

Assessment Center

Software Demonstration

Sample Questions

Request Short Forms

Assessment CenterSM is a free, online research management tool that enables researchers to create study-specific Web sites for capturing participant data securely. PROMIS[®] instruments (short forms, computerized adaptive tests, profiles) are a central feature of the Assessment Center instrument library.

- Visit the [Assessment Center](#)

Contact PROMIS | Policies | Accessibility | FAQs | Glossary | File Formats | Site Map | PROMIS Researcher Login | PDMC Forms Login

USA.gov

www.nihpromis.org/software/softwarehome

(From: <http://www.nihpromis.org/about/instructional> Assessed 10/30/13)



Resources

[Instrument Library](#)[Scoring Manuals](#)[Workshops](#)[Publications](#)[Presentations](#)[User Manuals](#)[Glossary](#)[Terms and Conditions](#)[FAQ](#)[Release History](#)[Usage Statistics](#)[About Us](#)[Video Tutorials](#)

Contact Us
help@assessmentcenter.net
Help Line: 877-283-0596

© 2007-2013
David Cella, Ph.D.,
Richard Gershon, Ph.D.,
Michael Bass, M.S. &
Nan Rothrock, Ph.D.

Support Hours:
9:00am - 5:00pm CST
Monday - Friday

WHAT IS ASSESSMENT CENTERSM

Assessment CenterSM is a free, online data collection tool that enables researchers to create study-specific websites for capturing participant data securely online.

Studies can include measures within the Assessment Center library as well as custom instruments entered by the researcher. The instrument library includes self- and proxy-report short forms, computerized adaptive tests (CATs), and batteries or profiles from:

- Patient-Reported Outcomes Measurement Information System (PROMIS)
- Quality of Life in Neurological Diseases (Neuro-QOL)
- NIH Toolbox

Among other important features, Assessment Center also enables:

- Downloading library instruments for administration on paper
- Customization of items or instruments (e.g., format, randomization, skip patterns)
- Real-time scoring of CATs and short forms
- Storage of protected health information (PHI) in a separate, secure database
- Automated accrual reports
- Real-time data export
- Ability to capture endorsement of online consent forms

ANNOUNCEMENTS

- **Additional PROMIS Instruments now available in Spanish:** See the Instrument Library link at left to see what PROMIS instruments are available in Spanish.
- **New PROMIS Computer Adaptive Tests for Upper Extremity Function and Mobility:** Physical Function can now be assessed specifically for upper or lower body function. The full Physical Function CAT remains available.
- **Updated versions of some PROMIS Instruments:** Some PROMIS item banks have had minor modifications (typically removal of 1-2 items).

Demonstration CAT

Try out a PROMIS Computerized Adaptive Test and get an instant score report. CATs include Emotional, Physical, and Social Health. Click here to begin.



Request PDFs of
PROMIS Short Forms



Sponsors

[PROMIS](#)[Neuro-QOL](#)[NIH Toolbox](#)

Studies of Interest

[PROsetta Stone](#)

Assessment Center reserves the right to have regular scheduled maintenance windows. Weekly maintenance may be performed on Sunday mornings from 7am to 9am CST. During this time, Assessment Center may be unavailable. We apologize for any inconvenience this may have. If you have any questions, please contact us at help@assessmentcenter.net



Instruments Available for Use in Assessment Center

July 15, 2013

The Assessment Center Instrument Library includes instruments from PROMIS, Neuro-QOL, and the NIH Toolbox. All instruments are available for use in data collection through Assessment Center. Most instruments are also available as PDFs that can be used for paper/pencil data collection or to facilitate data collection in other applications. To access PDFs:

1. Register in Assessment Center (www.assessmentcenter.net)
2. Login
3. Click on the PDF hyperlink in the upper right corner of the application
4. Agree to the Terms and Conditions of Use and download the instruments of interest



PROMIS

PROMIS has many assessment options available to measure self-reported health for clinical research and practice. PROMIS assessment instruments are drawn primarily from calibrated item banks (sets of well-defined and validated items) measuring concepts such as pain, fatigue, physical function, depression, and social function. These calibrated item banks can be used to derive short forms (typically requiring 4-10 items per concept), or computerized adaptive tests (CAT; typically requiring 4-7 items per concept for more precise measurement). Instruments are available for adult self-report, child self-report, and parent proxy report for his/her child.

Tables 1 through 4 list the calibrated PROMIS item banks or scales, item pools, short forms, and profiles. **Item banks** are calibrated items from which a summary score can be obtained from a subset of items (i.e. via CAT or short form) whereas **scales** are calibrated items from which a summary score should be obtained only from the complete set of items. **Item pools** are collections of related items that are not intended to produce a summary score but instead are to be used as single items. **Short forms** are static subsets of item banks, and **profiles** are fixed collections of short forms measuring multiple concepts. Table 6 lists PROMIS instruments currently under development.

Table 1: PROMIS Instruments Available in Assessment Center (www.assessmentcenter.net)

Domain	Adult # items		Pediatric # items		Parent Proxy Report for Pediatric Patients # items	
	Bank/ Scale/ Pool	Short Forms	Bank/ Scale	Short Form	Bank/ Scale	Short Form
Emotional Distress – Anger	22	8	6		5	
Emotional Distress – Anxiety	29	4, 6, 7, 8	13	8	13	8
PROMIS-Cancer – Anxiety	22					
Emotional Distress – Depression	28	4, 6, 8a, 8b	13	8	13	6
PROMIS-Cancer – Depression	30					

(From: <http://www.nihpromis.org/about/instructional> Assessed 10/30/13)



Assessment CenterSM

Studies

Instruments

Set-up

Preview

Administration

PROMIS PDFs

Below are PROMIS Instruments in PDF format. Prior to downloading, you must accept the terms of use. Click on ©, read the terms of use, and click agree to accept.

Study	Document	Date Published	Terms of Use
PROMIS	PROMIS Adult Item Banks	02/13/2011	© Endorsed 10/29/2013
PROMIS	PROMIS Adult Short Forms	02/13/2011	© Endorsed 10/29/2013
PROMIS	PROMIS Cancer Item Banks	03/22/2012	© Endorsed 10/29/2013
PROMIS	PROMIS Adult Profile 29,43,57	04/16/2009	© Endorsed 10/29/2013
PROMIS	PROMIS Pediatric Profile 25, 37, 49	04/16/2011	© Endorsed 10/29/2013
PROMIS	PROMIS Pediatric Short Forms	06/12/2009	© Endorsed 10/29/2013
PROMIS	PROMIS Sexual Function Profiles	06/20/2012	© Endorsed 10/29/2013
PROMIS	PROMIS Parent Proxy Item Banks and Short Forms	07/07/2011	© Endorsed 10/29/2013
PROMIS	PROMIS Pediatric Item Banks	09/09/2011	© Endorsed 10/29/2013
PROMIS	PROMIS Adult Profile Short Forms Investigator	09/26/2010	© Endorsed 10/29/2013
PROMIS	PROMIS Adult Profile Short Forms Participant	09/26/2010	© Endorsed 10/29/2013
PROMIS	PROMIS Sexual Function User Manual	10/19/2011	© Endorsed 10/29/2013

(From: <http://www.nihpromis.org/about/instructional> Assessed 10/30/13)



Study List (Physical Ability Assessment)

Study List

To get started, please select an existing study or create a new one. Then continue work in the system by selecting from the tabs above.

[Create New Study](#)

To select, click on study name:

Hide Archived Studies

My Studies

Name	Created By		
Physical Ability Assessment	Mikles, Sean (3/17/2013)	Properties	Team
Person-Centered Wellness Home	Hlavacek, Patrick (10/16/2013)	Properties	Team

Study Content (Physical Ability Assessment)

Study Content

Click the Add button to add instruments to your study. Click the Create button to create custom instruments in your study.

You have selected the following instruments for this study.

Order the instruments by entering the desired position into the text box, then click Save.

To exclude an instrument from your study, click on the Include checkbox.

Hide Excluded Instruments

Study Content							
Order	Name	Administration Study			Include	Terms of Use	
<input type="text" value="1"/>	<input type="checkbox"/> Physical Assessment Survey	Physical Ability Assessment	Customize	Preview	Properties	Statistics	<input checked="" type="checkbox"/> Notes
<input type="text" value="2"/>	<input type="checkbox"/> Screener Log	Physical Ability Assessment	Customize	Preview	Properties	Statistics	<input checked="" type="checkbox"/> Notes
<input type="text" value="3"/>	<input type="checkbox"/> Hispanic Origin and Race	Physical Ability Assessment	Customize	Preview	Properties	Statistics	<input checked="" type="checkbox"/> Notes
<input type="text" value="4"/>	<input type="checkbox"/> Physical Assessment Survey - Demographics	Physical Ability Assessment	Customize	Preview	Properties	Statistics	<input checked="" type="checkbox"/> Notes
<input type="text" value="5"/>	<input type="checkbox"/> Physical Activity - CHAMPS	Physical Ability Assessment	Customize	Preview	Properties	Statistics	<input checked="" type="checkbox"/> Notes
<input type="text" value="6"/>	<input type="checkbox"/> PROMIS SF v1.0-Depression 4a	PROMIS	Customize	Preview	Properties	Statistics	<input checked="" type="checkbox"/> Notes ©
<input type="text" value="7"/>	<input type="checkbox"/> PROMIS SF v1.0-Fatigue 4a	PROMIS	Customize	Preview	Properties	Statistics	<input checked="" type="checkbox"/> Notes ©
<input type="text" value="8"/>	<input type="checkbox"/> PROMIS SF v1.0 - Pain Behavior 7a	PROMIS	Customize	Preview	Properties	Statistics	<input checked="" type="checkbox"/> Notes ©
<input type="text" value="9"/>	<input type="checkbox"/> PROMIS SF v1.0-Pain Interference 4a	PROMIS	Customize	Preview	Properties	Statistics	<input checked="" type="checkbox"/> Notes ©
<input type="text" value="10"/>	<input type="checkbox"/> NewCustom PROMIS Scale v1.0 - Pain Intensity 3a	Physical Ability Assessment	Customize	Preview	Properties	Statistics	<input checked="" type="checkbox"/> Notes



[Study Content \(Physical Ability Assessment\)](#) >> Add an Instrument

Add an Instrument

First, select instrument or battery (a fixed set of instruments). Use search criteria to find and add instruments / batteries to your study.

Instrument

Battery

Study:

All Public

Type:

All

Domain:

All

Show Results

Search Results

Add to Study

Select	Name	Administration Study	Type	Domain	Statistics	Terms of Use	
<input type="checkbox"/>	<input type="checkbox"/> Neuro-QOL Bank v1.0 - Ability to Part. in SRA	Neuro-QOL	Item Bank/CAT (Computerized Adaptive Testing)	Social Function, Ability to Participate in Social Roles/Activities	Statistics	©	
<input type="checkbox"/>	<input type="checkbox"/> Neuro-QOL Bank v1.0 - AC - Executive Function	Neuro-QOL	Item Bank/CAT (Computerized Adaptive Testing)	Applied Cognition, Executive Function	Statistics	©	
<input type="checkbox"/>	<input type="checkbox"/> Neuro-QOL Bank v1.0 - AC - General Concerns	Neuro-QOL	Item Bank/CAT (Computerized Adaptive Testing)	Applied Cognition, General Concerns	Statistics	©	
<input type="checkbox"/>	<input type="checkbox"/> Neuro-QOL Bank v1.0 - Anxiety	Neuro-QOL	Item Bank/CAT (Computerized Adaptive Testing)	Anxiety/Fear	Statistics	©	
<input type="checkbox"/>	<input type="checkbox"/> Neuro-QOL Bank v1.0 - Depression	Neuro-QOL	Item Bank/CAT (Computerized Adaptive Testing)	Depression/Sadness	Statistics	©	
<input type="checkbox"/>	<input type="checkbox"/> Neuro-QOL Bank v1.0 - Emotional & Beh. Dyscontrol	Neuro-QOL	Item Bank/CAT (Computerized Adaptive Testing)	Emotional Distress/Negative Affect	Statistics	©	



[Study Content \(Physical Ability Assessment\)](#) >> Instrument Properties

Instrument Properties

Name*

Physical Assessment Survey - Demographics

Select the domain or domains for this instrument*

- Apathy
- Depression/Sadness
End of Life Concerns
Fatigue
Motor
Pain
- Pain Behavior
- Pain Intensity
- Pain Interference
Physical Function

Language:

English

Status:

English

Type*:

Spanish

German

French

IRT Model:

...

Upload PDF

Development on 03/17/13 by Sean Mikles

Description*

Demographic information for the physical assessment survey.

Comments

(*) fields are required.

[Study Content \(Physical Ability Assessment\)](#) >> Instrument Properties

Instrument Properties

Name*

Physical Assessment Survey - Demographics

Select the domain or domains for this instrument*

- Apathy
- Depression/Sadness
End of Life Concerns
Fatigue
Motor
Pain
- Pain Behavior
- Pain Intensity
- Pain Interference
Physical Function

Language: English

Status: Under Development on 03/17/13 by Sean Mikles

Type*: Short Form

IRT Model: Item Bank/CAT (Computerized Adaptive Testing)
Short Form

Description*

Demographic information for the physical assessment survey.

Comments

(*) fields are required.

[Study Content \(Physical Ability Assessment\)](#) >> [Instrument Detail \(Physical Assessment Survey - Demographics\)](#) >> Item Details (spm004)

Item Detail

[New](#)
[Copy](#)
[Statistics](#)
[Save](#)
[Cancel](#)

ID*: spm004

Version: Text

Domain*

- Satisfaction with Social Roles and Activities
- - Satisfaction with Discretionary Social Activities
- - Satisfaction with Social Roles
- Social Isolation
- Social Relationships
- Stigma
- Stress
- Urinary/Bladder Function
- Other

Item Contains Protected
 Health Information (PHI)

Context

Stem*

Are you currently <i>(check only one):</i>

Administration Physical Ability
Study: Assessment

Original Physical Assessment Survey -
Instrument: Demographics

Creation Date: 3/17/2013

[Show Item History](#)

Responses

Type: Multiple Choice ▾

[Add another row](#)

Score	Response Text	Show Response Score	
↑↓ 1	Married	<input type="checkbox"/>	Delete
↑↓ 2	Single	<input type="checkbox"/>	Delete
↑↓ 3	Separated	<input type="checkbox"/>	Delete
↑↓ 4	Divorced	<input type="checkbox"/>	Delete
↑↓ 5	Widowed	<input type="checkbox"/>	Delete



Are you currently (*check only one*):

- Married
- Single
- Separated
- Divorced
- Widowed

Previous

Next

Exit



¿Está usted actualmente: (*marque solo uno*)

- Casado/a
- Soltero/a
- Seperado/a
- Divorciado/a
- Viudo/a

Anterior

Siguiente

Salir



How do I score PROMIS instruments?

- CATs are scored as they are administered by Assessment Center. A theta estimate is calculated after each response.
- Short forms and Profiles are scored by Assessment Center after the instrument has been completed. Scoring instructions for short forms are also available on the Assessment Center homepage under the Scoring Manual hyperlink
- T-score metric
 - Mean = 50
 - SD = 10
- Most PROMIS US General (note: not necessarily healthy) Population (from the 2000 Census)
- NIH effort called Prosetta Stone (www.prosetta.org) which allows a researcher to transform scores (via score transformation tables) from other commonly used PROs measures to the PROMIS metric

From: Training webinars on PROMIS, PROMIS instruments and Assessment Center, developed by Nan Rothrock (Northwestern University) and

<http://www.assessmentcenter.net/documents/FAQ.pdf>, Accessed: 10/30/2013



Lessons Learned

- Server certifications from your own institution to use the PROMIS Assessment Center
- PROMIS AC Lite can be downloaded to a secure encrypted laptop for data collection and then transferred to your own institution's server
 - Cannot use tablets with AC Lite
 - For AC Lite, laptop needs certain hardware and software specifications



PROMIS Assessment Center Resources

- Assessment Center User Manual (pdf to download)
- Training workshops at Northwestern University
- Video Tutorials available on Assessment Center homepage:
www.assessmentcenter.net
- Software application has a help function
- Help Desk
 - help@assessmentcenter.net
 - (877)283-0596

From: Training webinars on PROMIS, PROMIS instruments and Assessment Center, developed by Nan Rothrock (Northwestern University) and
<http://www.assessmentcenter.net/documents/FAQ.pdf>, Accessed: 10/30/2013





Columbia University
MAILMAN SCHOOL
OF PUBLIC HEALTH